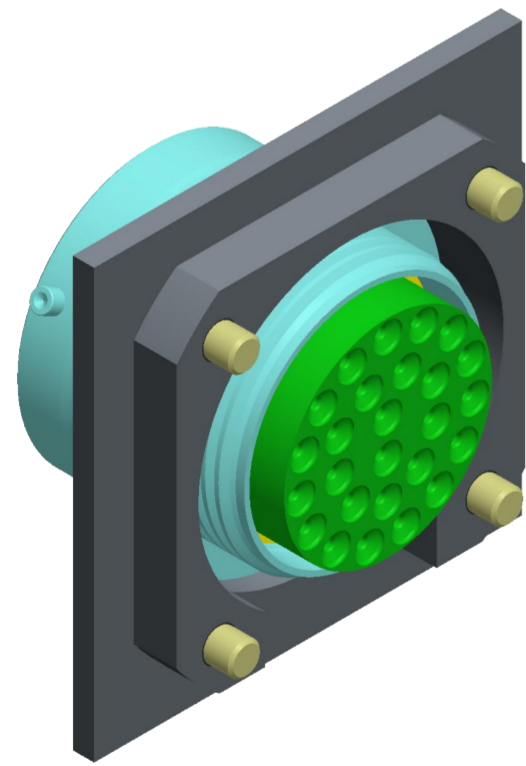


Breaking torque for ISO steel screw are compliant to the standard ISO 2320  
 Breaking torque for UNC steel screw are compliant to the standard NASM 8846

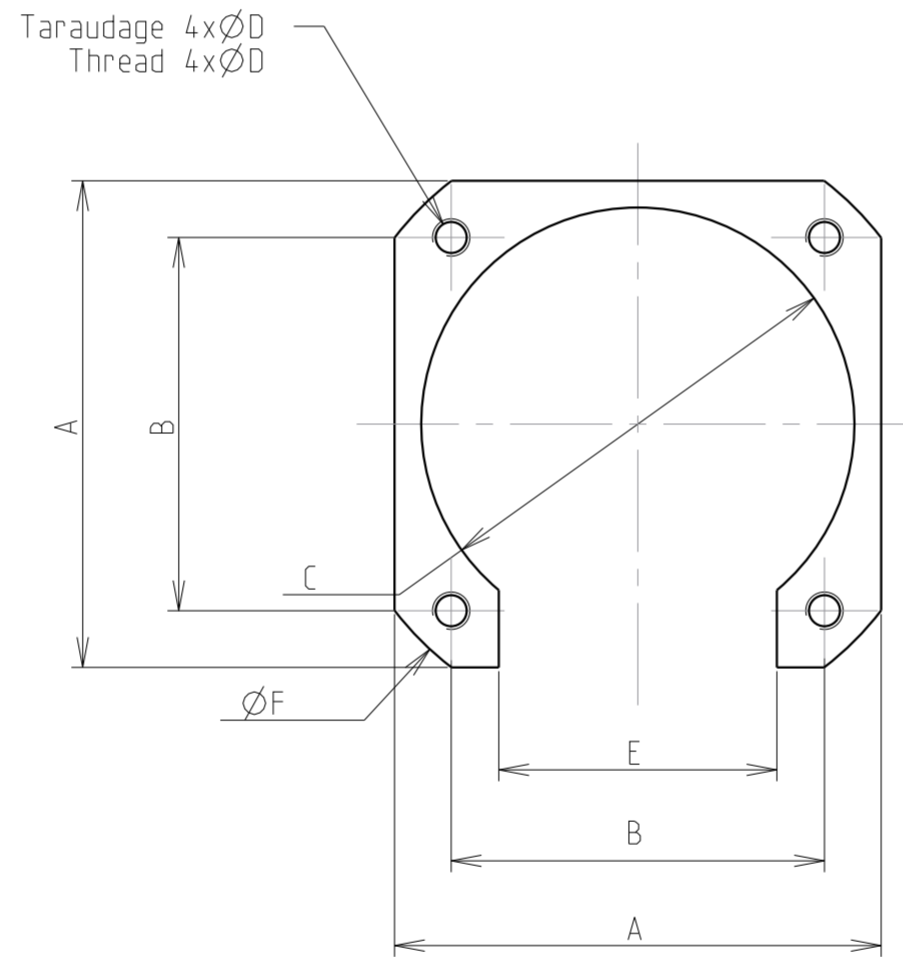
Les couples de freinage pour vis acier en ISO sont conformes à la norme ISO 2320  
 Les couples de freinage pour vis en acier UNC sont conformes à la normale NASM 8846

critical dimension  
 major dimension

FIXING PLATE SIZE	DIMENSIONS IN INCHES										TAILLE CONTRE PLAQUE	DIMENSIONS EN MILLIMETRES										MASSE WEIGHT in grams	MIL-DTL-26482					MIL-DTL-38999					EN 2997	
	P1	P2	A	B±.002	ØC <sup>+0.004</sup> / <sub>+0</sub>	THREAD ØD		E	ØF	P1		P2	A	B±0.05	ØC <sup>+0.1</sup> / <sub>+0</sub>	TARAUDAGE ØD		E	ØF	851/852	Serie I 8LTS		Serie II 8T		Serie III 8D		8533 Serie							
						ISO	UNJC									ISO	UNJC				OUT		IN											
08	.197	.110	.827	.594	.598	M3	4-40	.276	1.075	08	5	2.8	21	15.1	15.2	M3	4-40	7	27.3	2.1	8	--	8	--	9	8								
10	.197	.110	1	.720	.768	M3	4-40	.394	1.260	10	5	2.8	25.4	18.3	19.5	M3	4-40	10	32	2.8	10	9	10	9	11	10								
12	.197	.110	1.094	.811	.894	M3	4-40	.512	1.390	12	5	2.8	27.8	20.6	22.7	M3	4-40	13	35.3	2.8	12	11	12	11	13	12								
14	.197	.110	1.189	.906	1.024	M3	4-40	.551	1.520	14	5	2.8	30.2	23	26	M3	4-40	14	38.6	3.1	14	13	14	13	15	14								
16	.197	.110	1.280	.969	1.122	M3	4-40	.630	1.606	16	5	2.8	32.5	24.6	28.5	M3	4-40	16	40.8	3.7	16	15	16	15	17	16								
18	.197	.110	1.382	1.063	1.124	M3	4-40	.709	1.760	18	5	2.8	35.1	27	31.1	M3	4-40	18	44.7	3.8	18	17	18	17	19	18								
20	.197	.213	1.535	1.157	1.339	M3	4-40	.787	1.933	20	5	5.4	39	29.4	34	M3	4-40	20	49.1	4.2	20	19	20	19	21	20								
22	.197	.213	1.665	1.248	1.469	M3	4-40	.906	2.091	22	5	5.4	42.3	31.7	37.3	M3	4-40	23	53.1	5	22	21	22	21	23	22								
24	.197	.213	1.791	1.374	1.594	M3.5	6-32	1.024	2.256	24	5	5.4	45.5	34.9	40.5	M3.5	6-32	26	57.3	5.7	24	23	24	23	25	24								
243	.197	.213	1.791	1.374	1.594	M3	4-40	1.024	2.256	243	5	5.4	45.5	34.9	40.5	M3	4-40	26	57.3	5.7	24	23	24	23	25	24								



SCALE 2/1/ ECHELLE 2/1



CUSTOMER DRAWING/ PLAN CLIENT

Country	Jurisdiction & Control List
FR	NOT LISTED

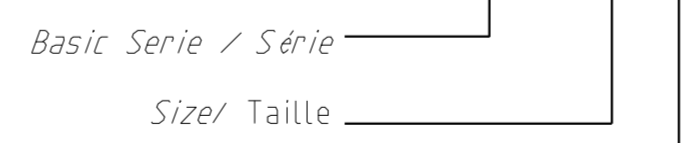
e	31/01/17	Plan refait sous Créo; Version Fr/Uk	C.PHILIPPE	P.GERARD	DE2017-0057
Iss	Date	MODIFICATIONS	Designed by	Checked by	MOD N°

MATERIAL	TREATMENT	PROTECTION/PLATING
--	--	CODE --

DIMENSIONS ARE DEFINED BEFORE PLATING	
TITLE	PROJECT
CONTRE PLAQUE 4 TROUS AUTOFREINEE	SN1252
FOUR HOLES HELICOIL SCREW LOCK FIXING-PLATE	

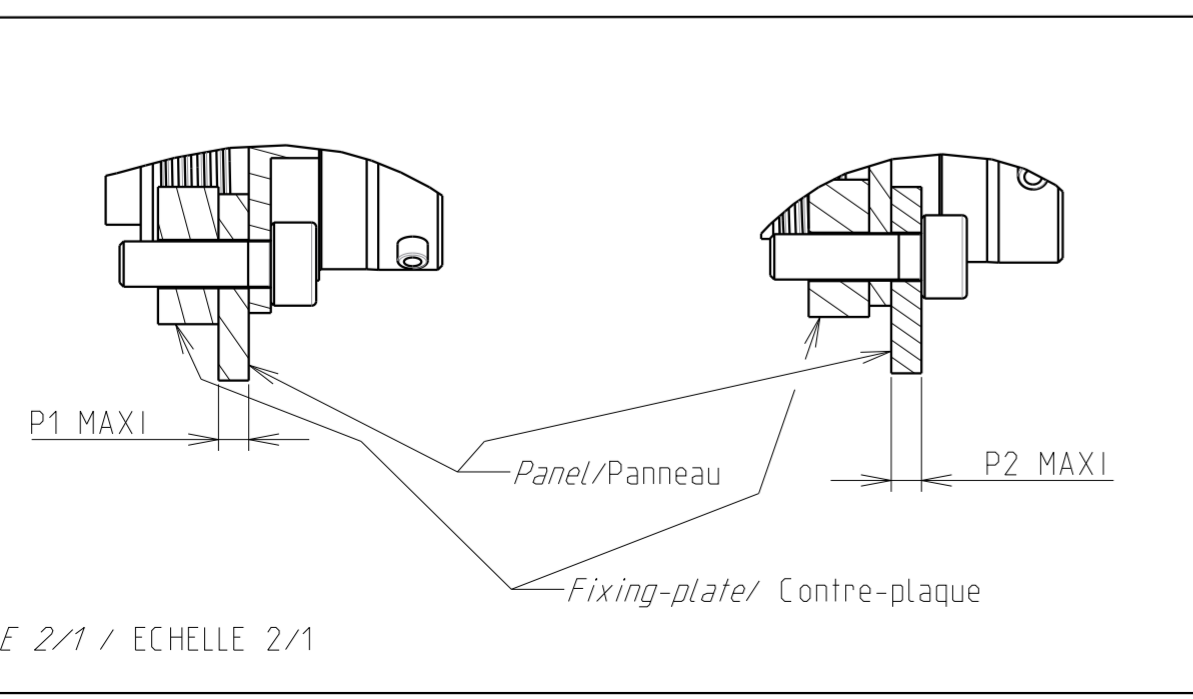
Material Reference -		<b>SOURIAU</b>	
Generales tolerances ISO 2768		3. RUE DU VALLON ZAC N°2 94440 MAROLLES-EN-BRIE (FRANCE) TEL. 33 (0)1 45 10 78 00	
Scale ~7/5	General machining Surface texture Ra 1.6	<b>SOURIAU</b>	
Geometrical Tolerances: NF EN ISO 1101		SOURIAU DRG N°	
This document is the property of SOURIAU it must not be reproduced or communicated without permission.		FORMAT A2	<b>C31-SN1252XX-X</b>

PART NUMBER/ Référence commerciale: SN1252-XX-X



N: ISO Thread  
 Finish: Black anodization  
 Taraudage ISO.  
 Protection: Anodisation Noire

V: UNJC Thread class 3B  
 Finish: Green anodization  
 Taraudage UNJC classe 3B  
 Protection: Anodisation Verte



SCALE 2/1 / ECHELLE 2/1